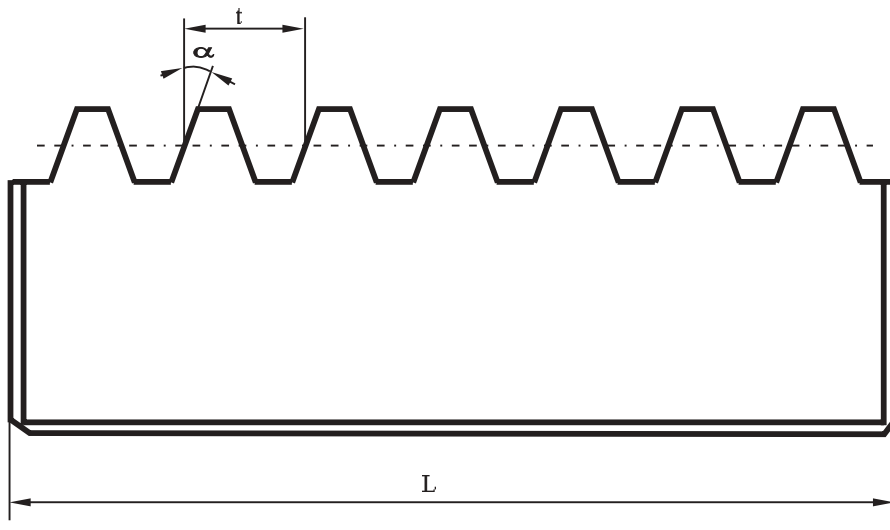


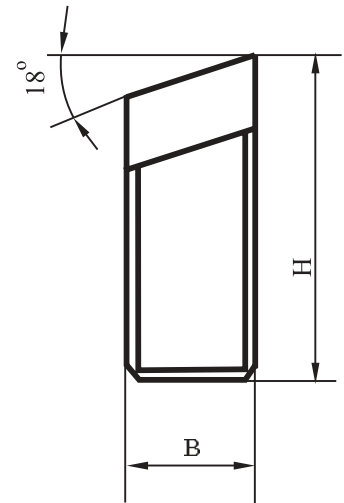


Cutite piptene cu dinti drepti

Rack shaped cutters



$$\alpha = 20^\circ$$



Modul mm	t mm	H mm	B mm	L mm	Nr. de dinti No. of teeth	Pret ()
1	2	3	4	5	6	7
1	3.142	48	20	76	24	
1.125	3.534	48	20	85	24	
1.25	3.927	48	20	94	24	
1.375	4.320	48	20	104	24	
1.5	4.712	48	20	113	24	
1.75	5.499	48	20	132	24	
2	6.283	48	20	132	21	
2.25	7.069	48	20	135	19	
2.5	7.854	48	20	150	19	
2.75	8.639	48	20	156	18	
3	9.425	48	20	170	18	
3.25	10.210	48	20	174	17	
3.5	10.996	48	20	176	16	
3.75	11.781	48	20	177	15	
4	12.566	48	20	176	14	
4.25	13.351	48	20	173	13	
4.5	14.137	48	20	170	12	
5	15.708	48	20	173	11	
5.5	17.279	48	20	174	10	
6	18.850	58	20	153	8	
6.5	20.420	58	20	165	8	
7	21.991	58	20	176	8	
7.5	23.561	58	20	189	8	
8	25.133	68	23	176	7	
9	28.274	68	23	169	6	
10	31.416	68	23	187	6	
11	34.558	78	23	241	7	
12	37.699	88	23	224	6	
14	43.982	88	23	216	5	
15	47.123	98	23	231	5	
16	50.265	98	23	246	5	
18	56.548	98	23	219	4	
20	62.831	108	23	243	4	
22	69.115	123	23	266	4	
24	75.398	128	23	215	3	
28	87.964	138	23	249	3	
30	94.247	143	23	266	3	



Cutite piptene cu dinti drepti Rack shaped cutters

$$\alpha = 15^\circ$$

Modul mm	t mm	H mm	B mm	L mm	Nr. de dinti No. of teeth	Pret ()
1	2	3	4	5	6	7
1	3.142	48	20	76	24	
1.125	3.534	48	20	85	24	
1.25	3.927	48	20	94	24	
1.375	4.320	48	20	104	24	
1.5	4.712	48	20	113	24	
1.75	5.499	48	20	132	24	
2	6.283	48	20	132	21	
2.25	7.069	48	20	135	19	
2.5	7.854	48	20	150	19	
2.75	8.639	48	20	156	18	
3	9.425	48	20	172	18	
3.25	10.210	48	20	174	17	
3.5	10.996	48	20	176	16	
3.75	11.781	48	20	177	15	
4	12.566	48	20	176	14	
4.5	14.137	48	20	170	12	
5	15.708	48	20	173	11	
5.5	17.279	48	20	174	10	
6	18.850	58	20	153	8	
6.5	20.420	58	20	165	8	
7	21.991	58	20	176	8	
8	25.133	68	23	176	7	
9	28.274	58	23	169	6	
10	31.416	68	23	187	6	
11	34.558	78	23	241	7	
12	37.699	88	23	224	6	
14	43.982	88	23	216	5	
16	50.265	98	23	246	5	